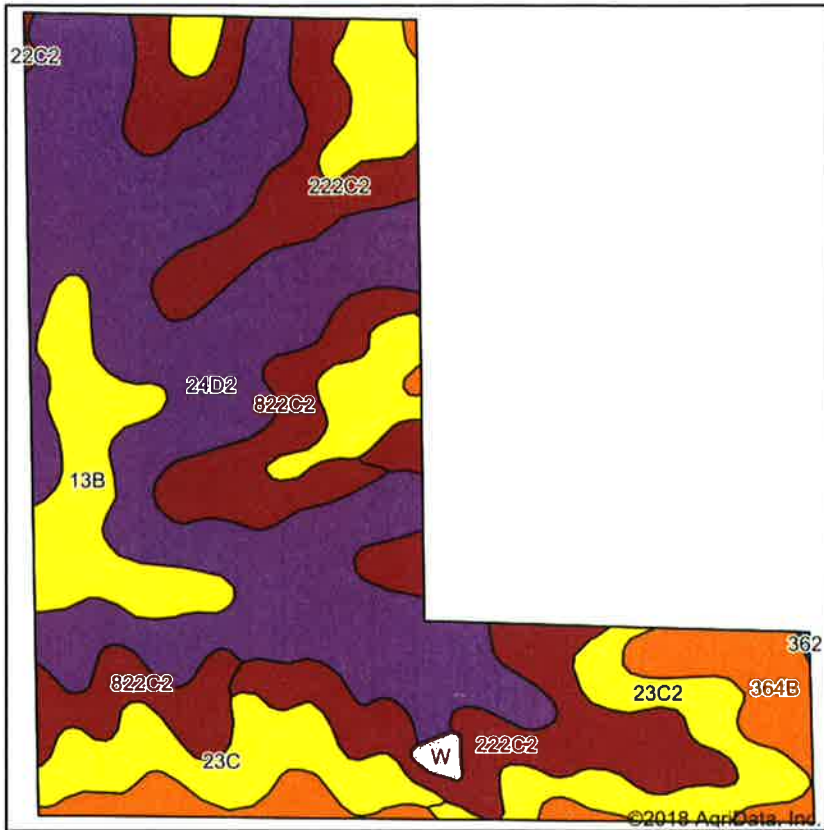
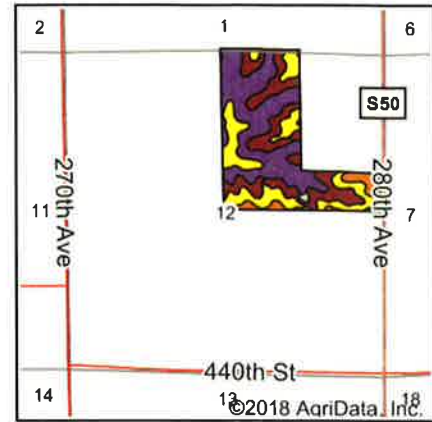


Soils Map



Soils data provided by USDA and NRCS.



State: **Iowa**
 County: **Lucas**
 Location: **12-71N-21W**
 Township: **Benton**
 Acres: **100**
 Date: **8/13/2018**



Area Symbol: IA117, Soil Area Version: 25											
Code	Soil Description	Acres	Percent of field	CSR2 Legend	Soil Drainage	Non-Irr Class *c	CSR2**	CSR	NCCPI Soybeans		
24D2	Shelby clay loam, 9 to 14 percent slopes, moderately eroded	39.68	39.7%		Well drained	IIIe	52	48			53
222C2	Clarinda silty clay loam, 5 to 9 percent slopes, moderately eroded	18.53	18.5%		Poorly drained	IVw	34	25			38
23C2	Arispe silty clay loam, 5 to 9 percent slopes, moderately eroded	12.18	12.2%		Somewhat poorly drained	IIIe	62	50			73
822C2	Lamoni silty clay loam, 5 to 9 percent slopes, moderately eroded	9.03	9.0%		Somewhat poorly drained	IIIe	36	30			43
13B	Zook-Olmitz-Vesser complex, 0 to 5 percent slopes	7.10	7.1%		Poorly drained	IIw	68	53			70
364B	Grundy silty clay loam, 2 to 5 percent slopes	6.77	6.8%		Somewhat poorly drained	IIe	72	75			69
23C	Arispe silty clay loam, 5 to 9 percent slopes	6.20	6.2%		Somewhat poorly drained	IIIe	66	55			75
W	Water	0.45	0.5%				0	0			0
362	Haig silt loam, 0 to 2 percent slopes	0.06	0.1%		Poorly drained	IIw	83	70			66
Weighted Average							51.6	44.8			55.2

**IA has updated the CSR values for each county to CSR2.

*c: Using Capabilities Class Dominant Condition Aggregation Method

Soils data provided by USDA and NRCS.