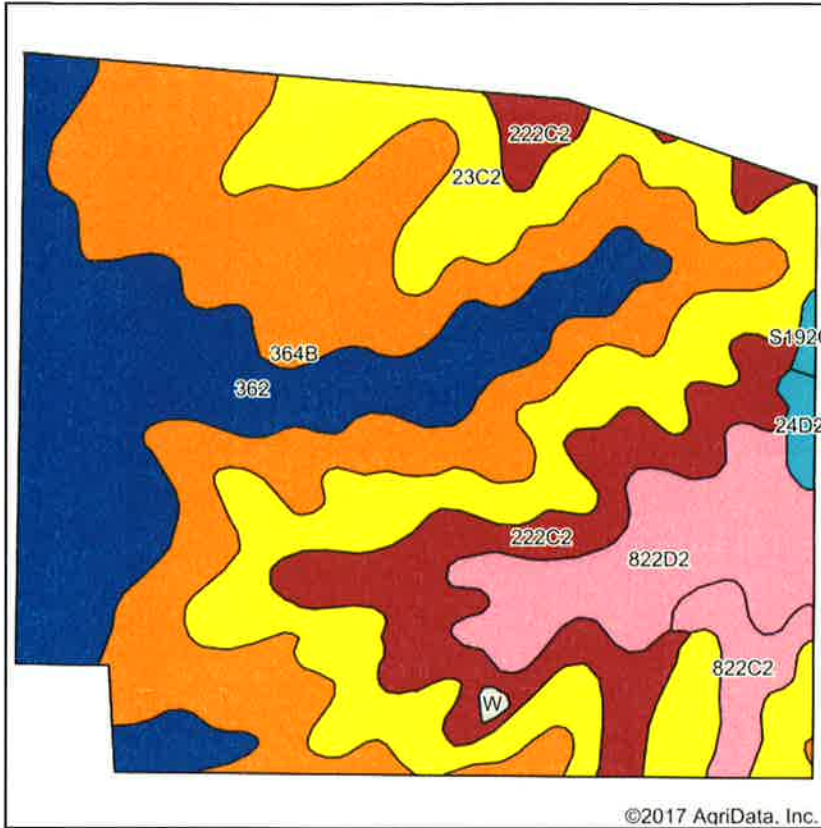
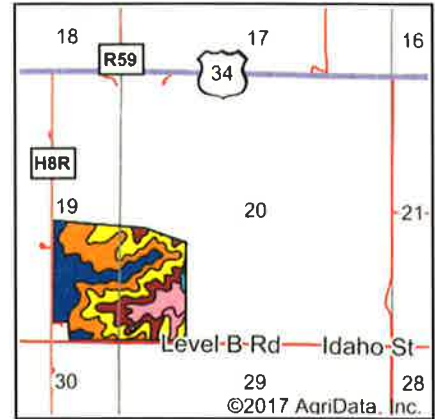


# Soils Map



Soils data provided by USDA and NRCS.



State: **Iowa**  
 County: **Clarke**  
 Location: **19-72N-24W**  
 Township: **Jackson**  
 Acres: **130.72**  
 Date: **1/17/2018**



Area Symbol: IA039, Soil Area Version: 23

Code	Soil Description	Acres	Percent of field	CSR2 Legend	Soil Drainage	Non-Irr Class *c	CSR2**	CSR
364B	Grundy silty clay loam, 2 to 5 percent slopes	39.00	29.8%		Somewhat poorly drained	Ile	72	75
23C2	Arispe silty clay loam, 5 to 9 percent slopes, moderately eroded	32.99	25.2%		Somewhat poorly drained	IIle	62	50
362	Haig silt loam, 0 to 2 percent slopes	27.56	21.1%		Poorly drained	IIw	83	70
222C2	Clarinda silty clay loam, 5 to 9 percent slopes, moderately eroded	15.89	12.2%		Poorly drained	IVw	34	25
822D2	Lamoni clay loam, 9 to 14 percent slopes, moderately eroded	10.88	8.3%		Somewhat poorly drained	IVe	30	15
822C2	Lamoni clay loam, 5 to 9 percent slopes, moderately eroded	3.05	2.3%		Somewhat poorly drained	IIle	29	30
24D2	Shelby clay loam, 9 to 14 percent slopes, moderately eroded	0.82	0.6%		Well drained	IIle	48	43
S192C2	Adair clay loam, heavy till, 5 to 9 percent slopes, moderately eroded	0.34	0.3%		Somewhat poorly drained	IIle	48	
W	Water	0.19	0.1%				0	0
<b>Weighted Average</b>							<b>62.4</b>	<b>*-</b>

\*\*IA has updated the CSR values for each county to CSR2.

\*- CSR weighted average cannot be calculated on the current soils data, use prior data version for csr values.

\*c: Using Capabilities Class Dominant Condition Aggregation Method

Soils data provided by USDA and NRCS